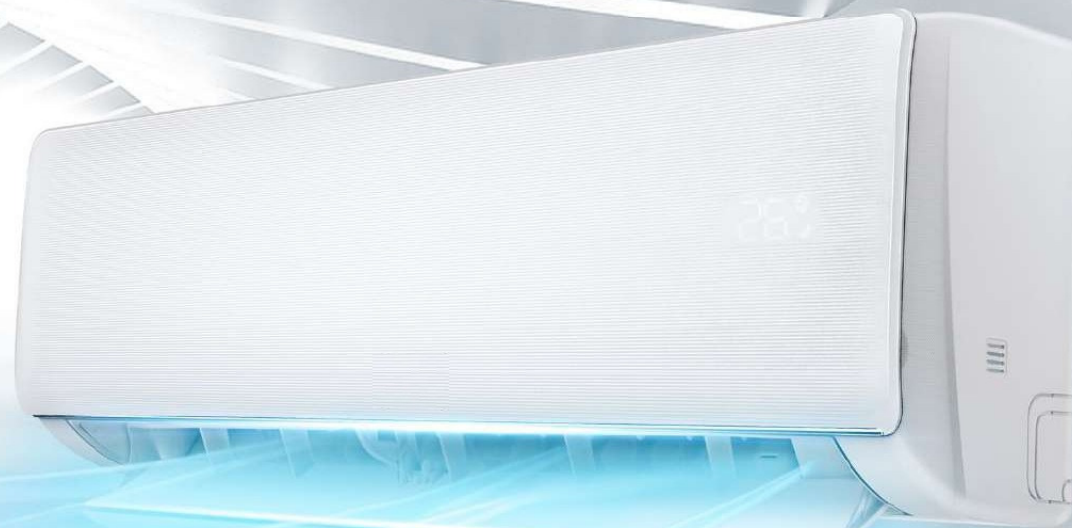




# Alfa Series

Split air-con



# Features

## Comfortable

- Super Quiet
- Vector Precision Air Supply
- Smart Airflow
- Comfortable Cooling
- Rapid Cooling in 30" & Rapid Heating in 60"
- 60°C Strong Cooling in High Ambient Temperature

## Clean & Healthy

- 55°C High Temperature Self-cleaning
- Filter-cleaning Reminder

## Convenient & Safety

- I Set
- I Feel
- Louver Position Memory
- Refrigerator Leakage Detection
- WIFI Control
- Electricity Consumption Management



# CONTENTS

**01** ➤ **Features**

---

**02** ➤ **Improvement & Advantage**

---

**03** ➤ **More Features**

---

# Rapid Cooling in 30" Rapid Heating in 60"

26°

\* Inverter Only

\* Automatically

Comfort Upgraded



Cool Wind blows out in



## In Cooling Mode

Outlet Temperature Decreased  
from 25°C to 18°C in 30 "



Heat Wind blows out in



## In Heating Mode

Outlet Temperature Increased  
from 20°C to 40°C in 60 "

\*Electric Auxiliary Heat Only



## 60°C Strong Cooling in High Temperature

### Original Invented Air-cooled Technology

Air-cooled electric control box is applied to effectively cool down temperature of components of outdoor unit.



60°C





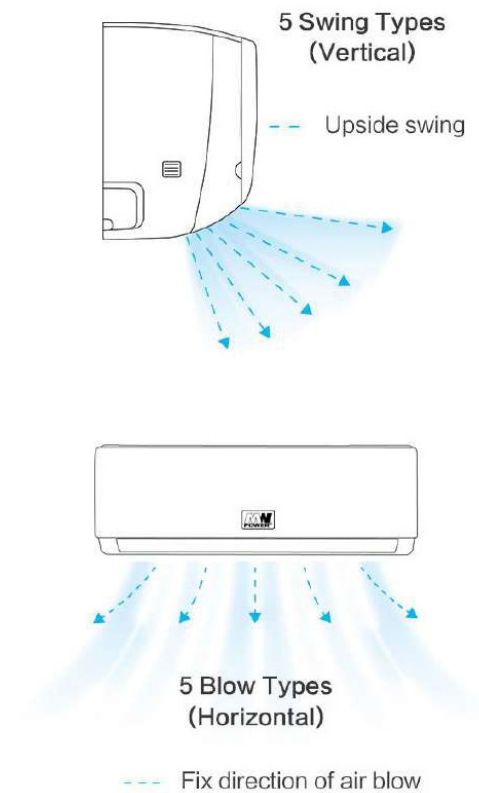
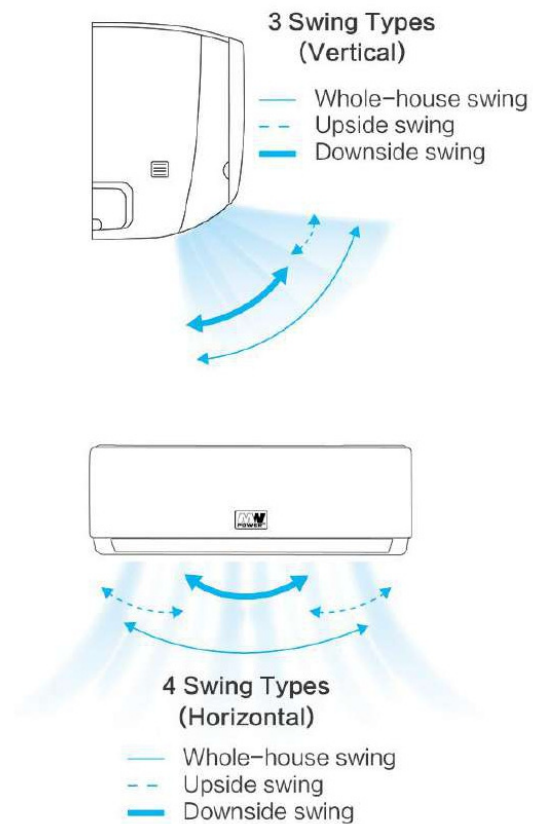
Super Quiet

**22dB** lowest

# Vector Precision Air Supply

More choices for users

\* Optional



# Smart Air Flow

Shower-style Air Flow  
In Cooling Mode

In cooling mode, the cool air is blowing towards the ceiling to provide a shower-style cooling experience.

In heating mode, the warm air is blowing towards the floor to provide a blanket-style heating experience.



In Cooling Mode



In Heating Mode

Blanket-style Air Flow  
In Heating Mode





# Comfortable Cooling



Maintain comfortable moisture  
Comfortable humidity **40% - 60%**





# 56°C High Temperature Self-cleaning & Sterilization



1. Frosting



2. Defrosting



3. High Temperature  
Drying

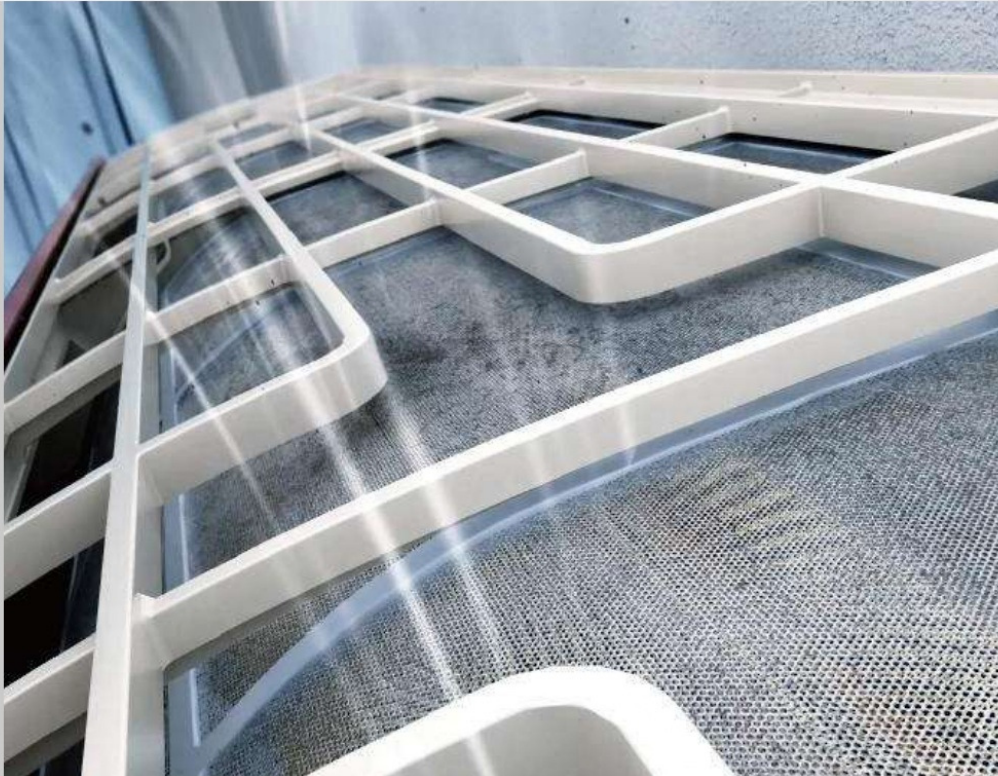


4. 56°C High  
Temperature  
Sterilization

\* Heat Pump DC Inverter Only

\* Optional

# Filter-cleaning Reminder



After running for a particular period, the air-con will automatically detect the cleanliness of the filter and remind users of cleaning.



# I Set

\* Inverter

Only

## Just 1 button is all you need!

Once it is activated, the air-con will memorized all your settings automatically, and have them restored at the next time you press the button.



I SET





## I Feel

\* Optional

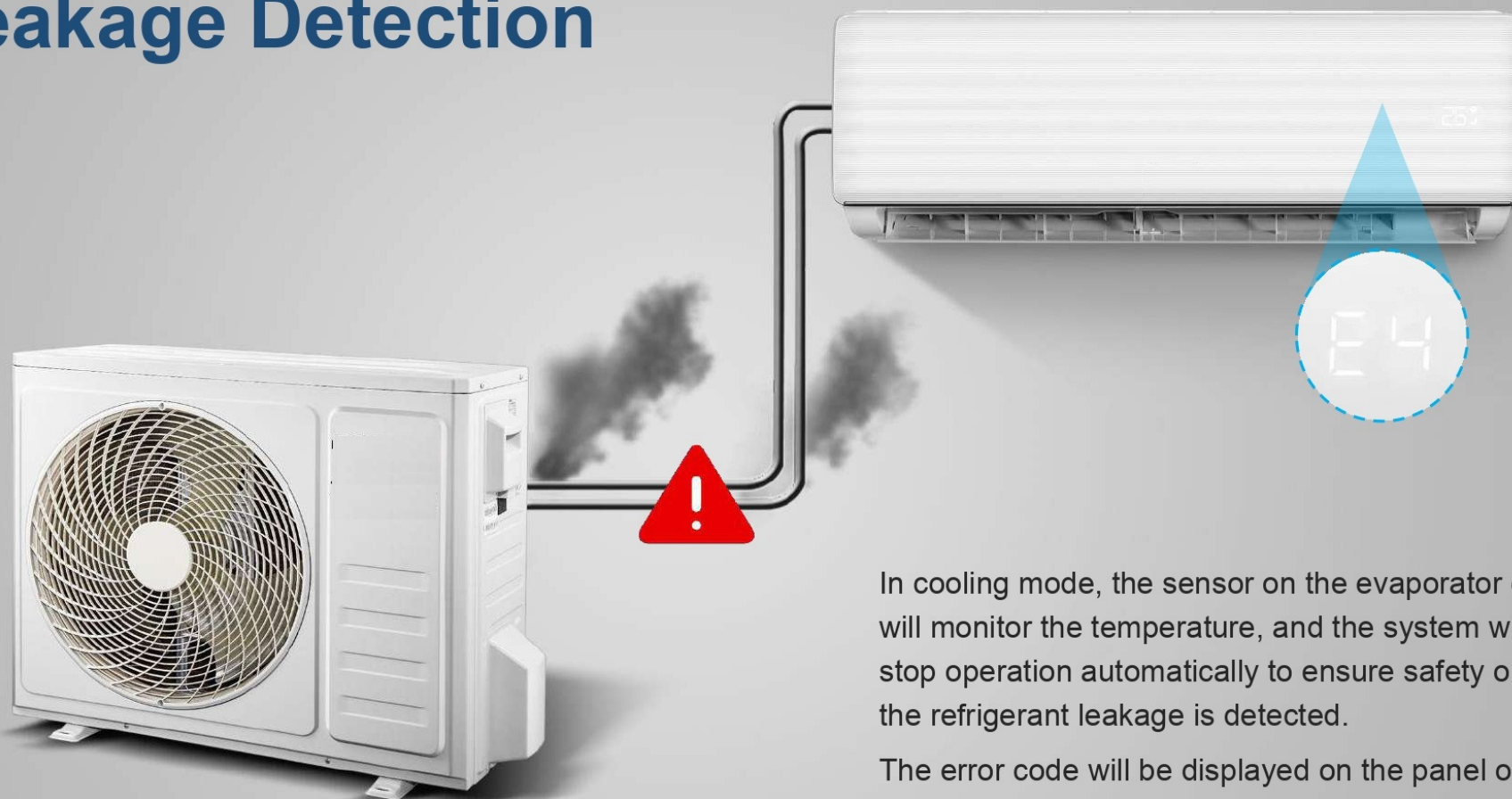
There is built-in with an additional temperature sensor in the remote controller to lively monitor the surrounding temperature, therefore, the air-con can adjust room temperature more accurately and provide extra comfort to users.



## Louver Position Memory

The louver will be restored to the previous position when the unit is restarted.

# Leakage Detection



In cooling mode, the sensor on the evaporator coil will monitor the temperature, and the system will stop operation automatically to ensure safety once the refrigerant leakage is detected.

The error code will be displayed on the panel of indoor unit.

\*On/Off

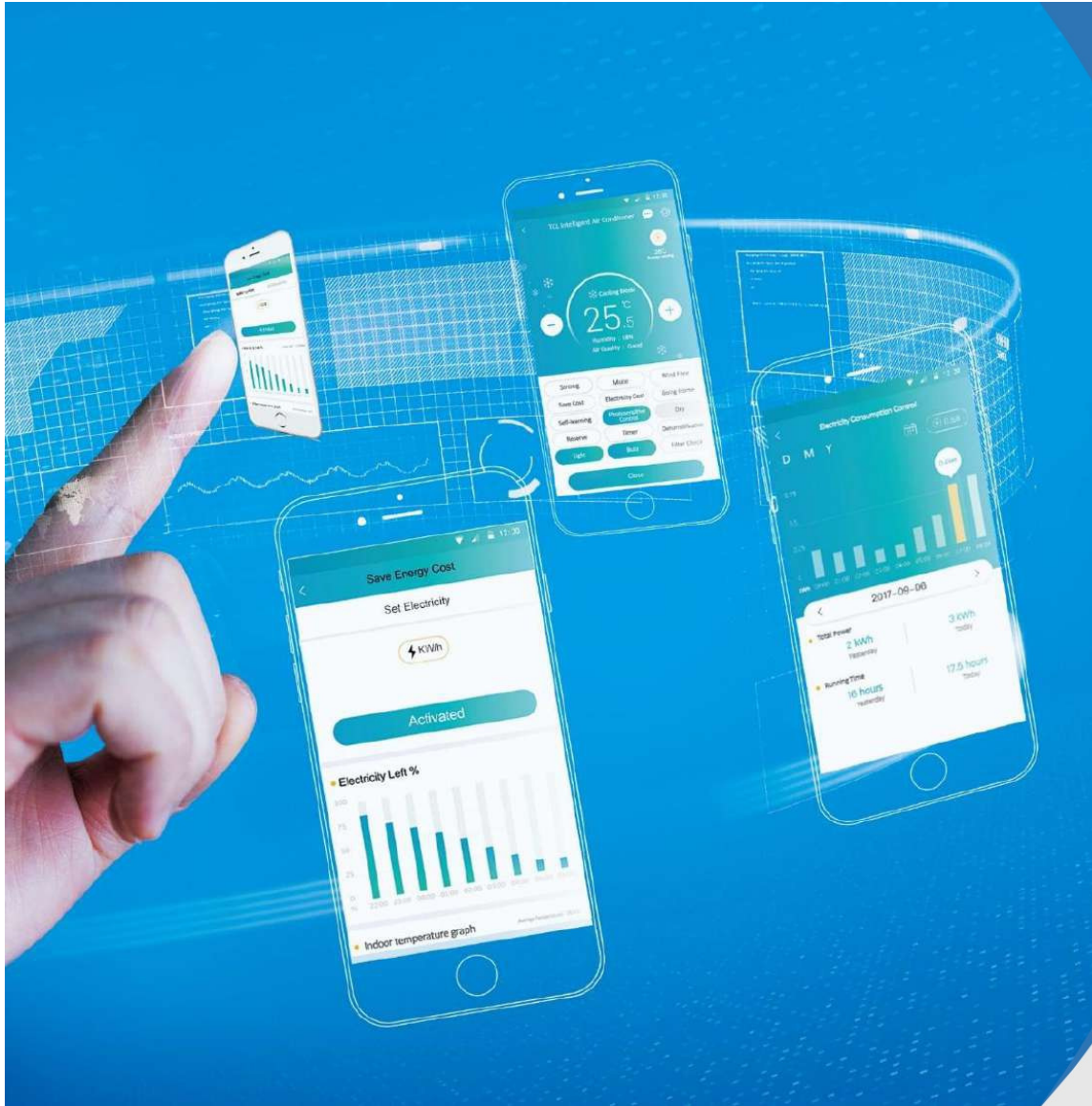


# Wi-Fi Control

\* Optional

Users can easily control the air-con outside the house via smart device, it provides convenient and intelligent life.





# Electricity Consumption Management

- Let users see how much electricity is saved. MW Power's energy-saving APP can clearly prove to you the true energy-saving of the MW Power Smart AC.
- **Electricity Consumption Monitoring:**  
The APP can display the electricity and charges in a chart table.
- **Customized Power Saving:**  
The users will be able to preset energy consumption to save money and the AC will automatically run at their request.

The background of the slide features a complex, abstract pattern of thin, wavy lines in various shades of gray. These lines flow across the frame, creating a sense of movement and depth. The pattern is denser in some areas and more sparse in others, contributing to a modern, tech-oriented aesthetic.

# **More Features**

# Function Guide

Alfa	Emergency Button	Self-diagnosis	BMC Fireproof Electric Box	I Feel	Turbo Mode	Mute Mode	Auto Mode	Independent Dehumidification	Anti-cold	Louver Position Memory	Vertical Swing	Horizontal Swing	Display On/Off	Smart Air Flow	8°C Heating	-20°C Heating	-30°C Heating	-15°C Heating	ECO Mode	Sleep Mode	1W Standby
On / Off	●	●	○	○	○	○	●	●	●	●	●	○	○	●	-	-	-	-	○	●	-
Inverter	●	●	○	○	○	○	●	●	●	●	●	○	○	●	○	○	○	○	○	●	○

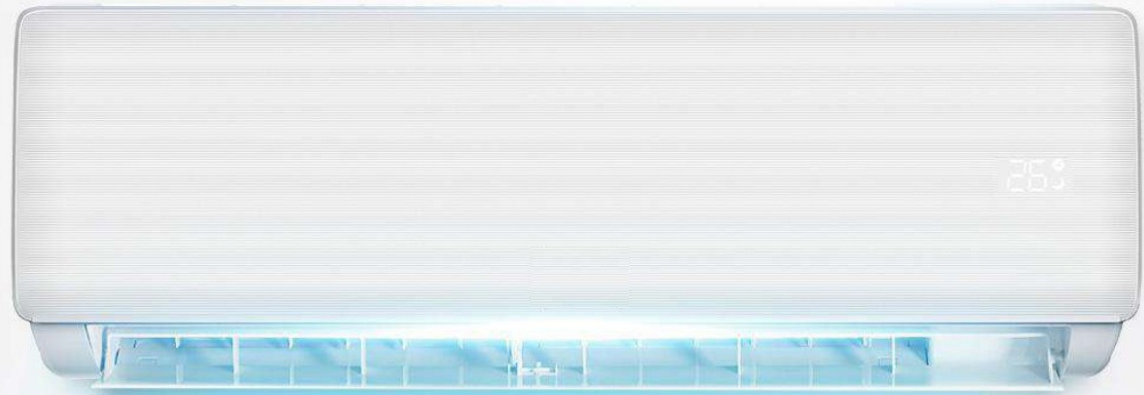
Alfa	One Button Start-up	24H Timer	Auto-restart	Wi-Fi Control	Ionizer	High Density Filter	Special Filter	Aroma Mosquito Repellent	Mildew Proof	Electricity Expenses Management	Ultra-low Energy-saving OFrequencyperation	AI Inverter Algorithm	Vector Precision Air Supply	Strong Cooling in High Ambient Temperature
On / Off	●	●	●	○	○	○	○	○	○	-	-	-	○	-
Inverter	●	●	●	○	○	○	○	○	○	○	○	●	○	○

Alfa	Rapid Cooling / Rapid Heating	Comfortable Cooling	Filter Cleaning Reminder	55°C High Temperature Self-cleaning	I Set	Smart Scenario Control	LED Concealed Display	Celsius and Fahrenheit Degree Switch	Dual Drainage	Golden Fin	Heating Belt	Wire Control
On / Off	-	-	-	-	○	-	●	○	●	○	-	○
Inverter	○	○	○	○	○	○	●	○	●	○	○	○



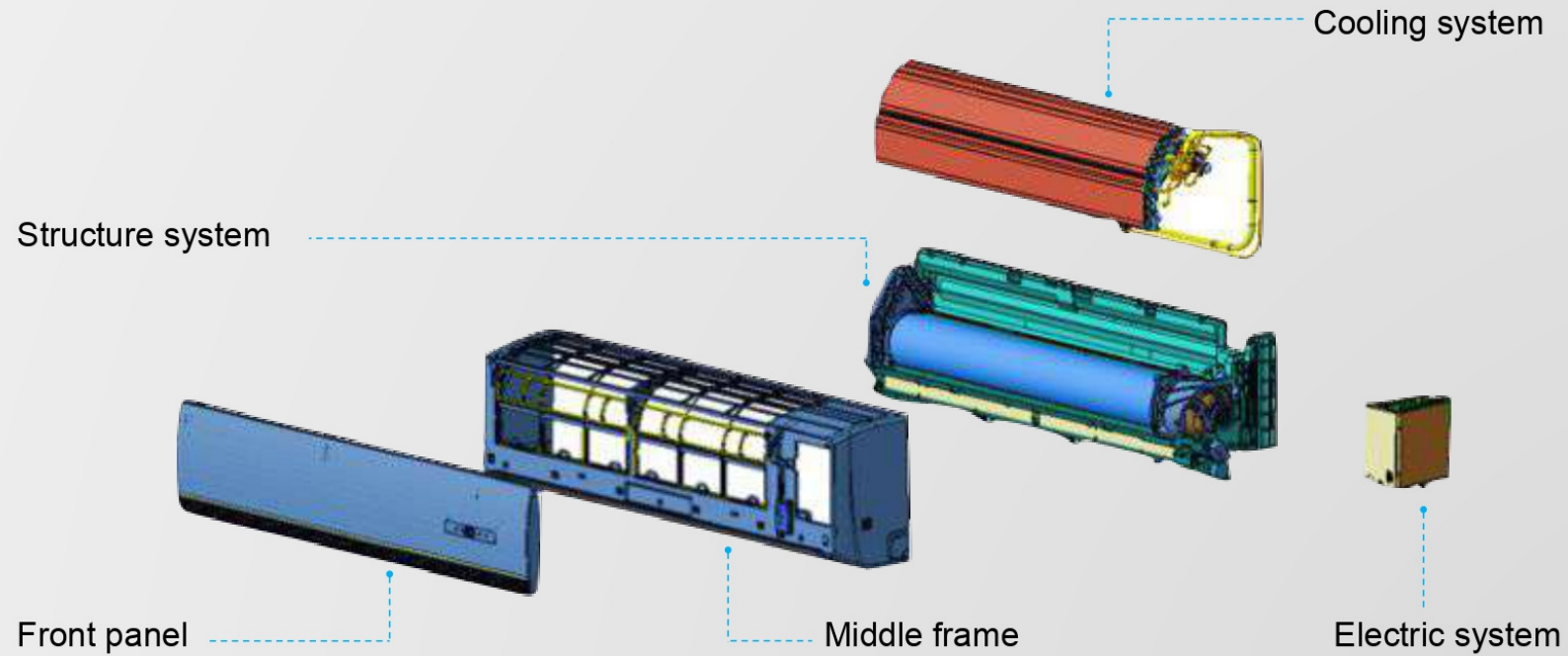
# Improvement & Advantage

- Structure Description
- Appearance Improvement
- Quality Improvement
- Efficiency Improvement





# Structure Description



# Appearance Improvement



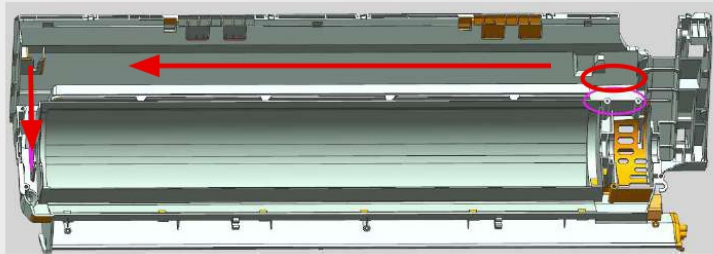
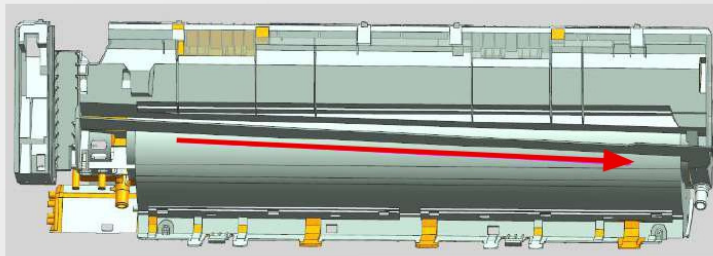
1. **Integrated Design of face frame** – More delicate outlook and efficient assembly
2. **Curved Side lines** – More differentiated design, convex side panel to avoid abnormal noise raised from thermal contraction
3. **Temperature sensor** – More accurate temperature control
4. No gaps between the air-con and the wall.

# Quality Improvement

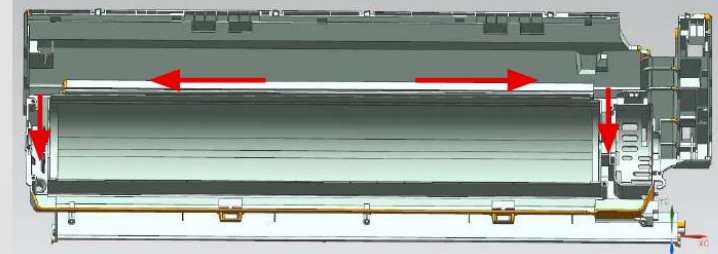
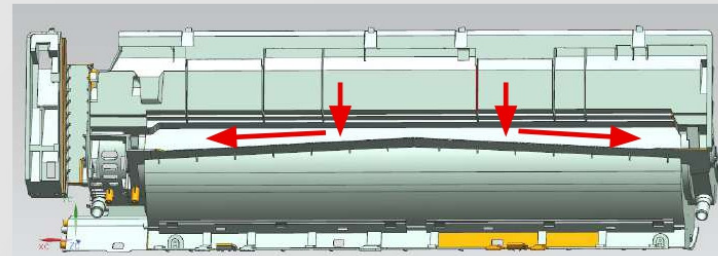


## Insulated design from condensate water to electricity

Improves the product quality and enhances the safety

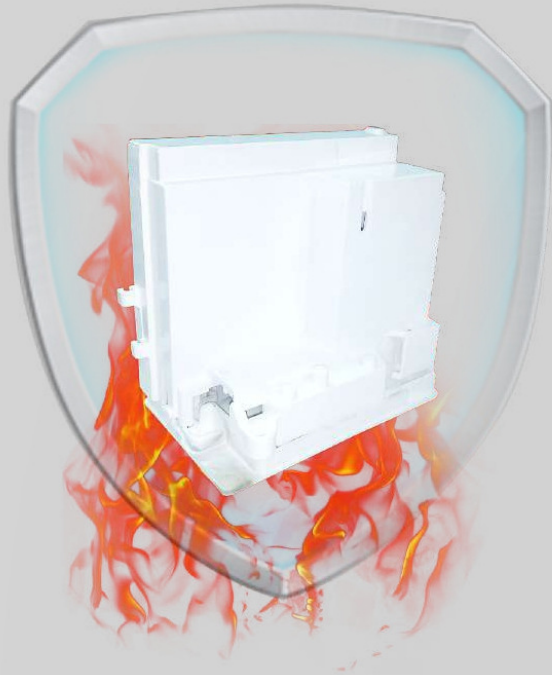


Alfa Series



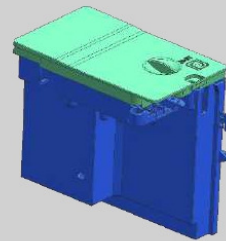
Glory Series

## Fireproof Electric Control Box



The box is optimized with larger space for safety and functional requirement.

Easy disassembly and maintenance.



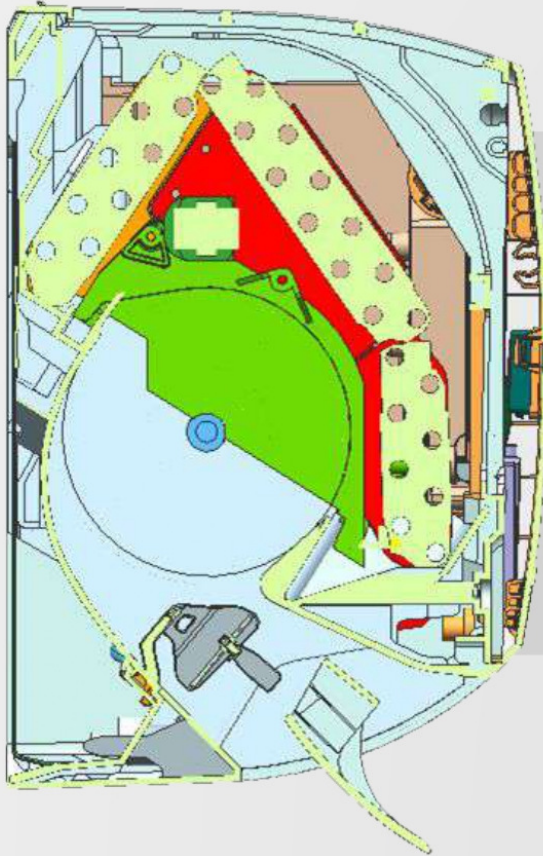


## Dual drainage (Optional)



It is optional to have drainage connected either from left or right.

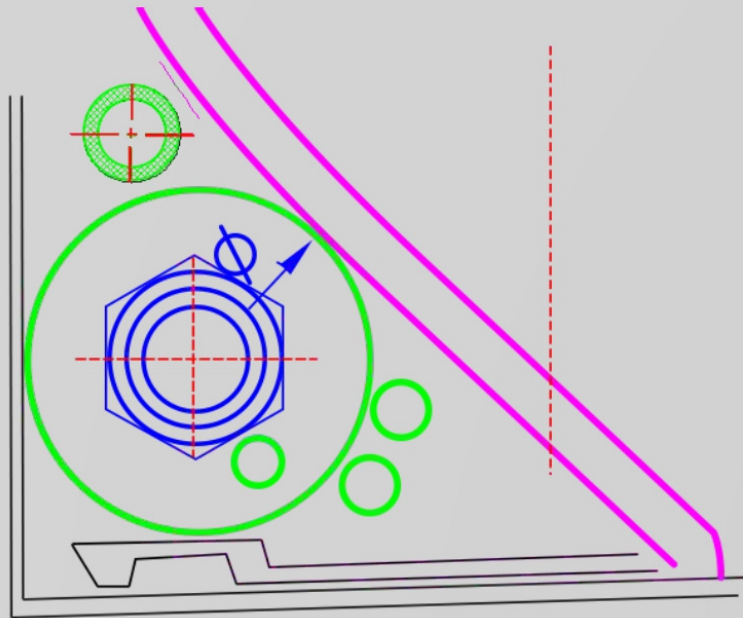
## Quality Improvement IV



### Noise Reduction

- A. Changing the angle of the air inlet, air outlet and volute tongue for better heating and blowing.
- B. Changing the bending angle of the evaporator to enlarge the heat exchange area and reduce the resistance of wind, in order to improve heat exchange efficiency.
- C. 1~2 dB noise reduction of the whole air conditioner.

# Quality Improvement V



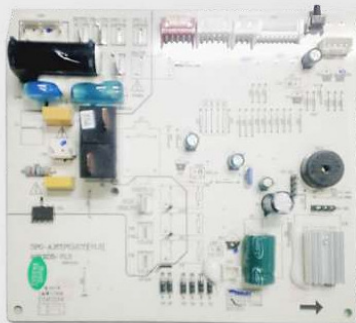
## Larger space for pipes

- A. Larger space for pipes to increase the assembly efficiency.
- B. Reduce the interference between pipes and frame.

# Quality Improvement VI

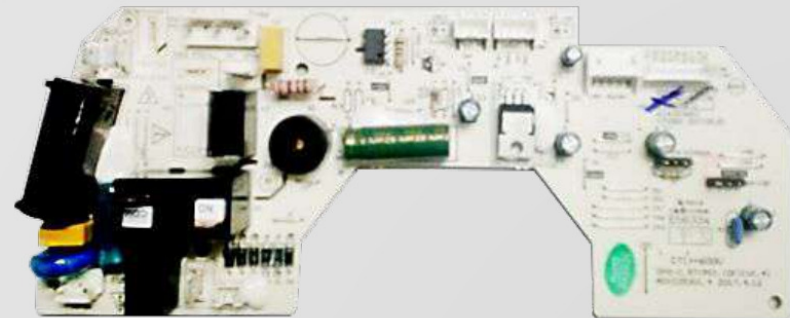
## PCB — Proper layout

**Alfa Series**  
Square electric board



- Increase the production efficiency and reduce the risk of falling down.
- High universality

**Other Series**  
Saddle-shaped electric board



- Limited space for functional and safety needs.



# Efficiency Improvement



# Efficiency Improvement I

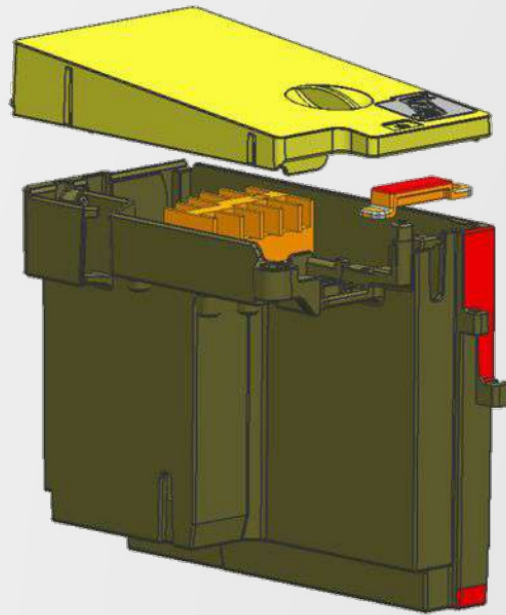


## Integrated designed water collector

- Reduce the quantity of the components to enhance the assembly efficiency.
- Reduce the gap between the components to prevent the water leakage and improve the quality.

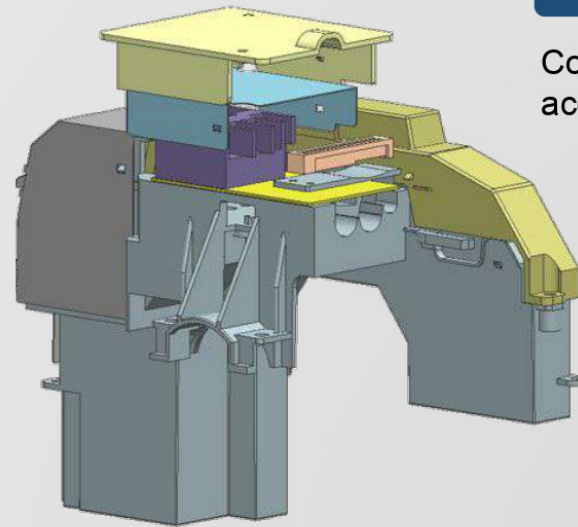
# Efficiency Improvement II

## Integrated design of safety cover and electric box cover



### Alfa Series

Simplified design for easy assembly and maintenance.



### Other Series

Complex assembly access

# Efficiency Improvement III

Reduce the quantity of screw, easy assembly save up to 5-8%

Alfa Series

Model	Type	Quantity	Efficiency
698X	3	18	<b>18%</b>
770X	3	21	<b>4%</b>
800X	3	19	<b>10%</b>
900X	3	21	<b>8%</b>
1010X	3	21	<b>25%</b>

Other Series

Model	Type	Quantity
710	4	22
770	4	22
800	4	21
900	6	23
1033	5	28



# Efficiency Improvement IV

## Loading Quantity Advantage

AX	Indoor	Outdoor	Loading Quantity
698X	710	600 (including pipe)	312
	698X	600 (including pipe)	378
770X	770	700	275
	770X	700	275
800X	800	700	256
	800X	700	256
900X	900	760	222
	900X	760	222
1010X	1033	900 (small)	143
	1010X	900 (small)	148
	1033	900 (big) foam	114
	1010X	900 (big) foam	120

\* The loading quantity of 698X and 1010X is increased.    \* The loading quantity of 770X/800X/900X is same as before.

# Thank You

---